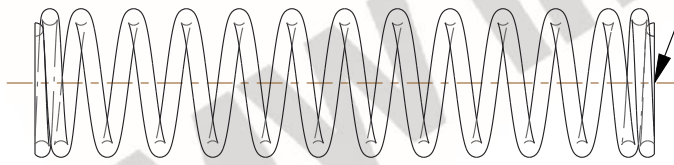


NOTES:

1. Material : Music Wire
2. Finish : Glod Irridite
3. Ends : Closed and Ground
4. Total Coils : 13.800
5. Sugg. Max. Deflection : 1.800 (in)
6. Sugg. Max. Load : 34.000 (lbs)
7. All Drawing Dimensions are in Inches [mm]

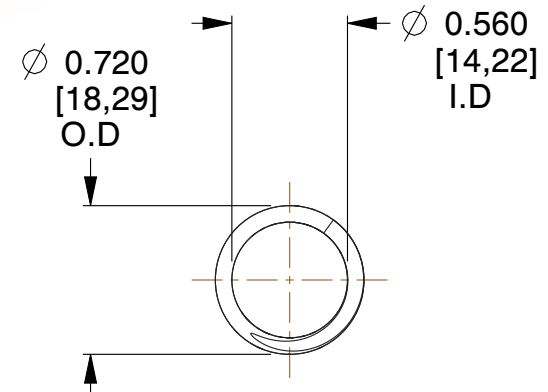


\varnothing 0.080
 [2,03]
 WIRE DIA



GROUND SURFACE

1.910
 [48,51]
 LENGTH



\varnothing 0.720
 [18,29]
 O.D

\varnothing 0.560
 [14,22]
 I.D

COMPONENT		SPRINGS	
72052 COMPRESSION SPRINGS		UNIT	INCH [mm]
		SHEET	1 of 1