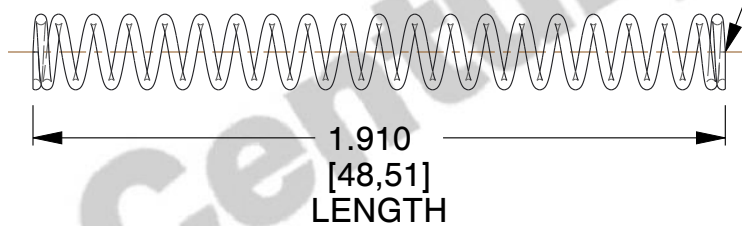


**NOTES:**

1. Material : Spring Steel
2. Finish : Glod Irridite
3. Ends : Closed and Ground
4. Total Coils : 21.500
5. Sugg. Max. Deflection : 0.760 (in)
6. Sugg. Max. Load : 11.000 (lbs)
7. All Drawing Dimensions are in Inches [mm]

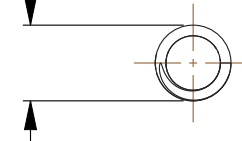


$\varnothing$  0.046  
 [1,17]  
 WIRE DIA



GROUND SURFACE

$\varnothing$  0.328  
 [8,33]  
 O.D



COMPONENT		SPRINGS	
<b>B11-23</b>  COMPRESSION SPRINGS		UNIT	INCH [mm]
		SHEET	1 of 1