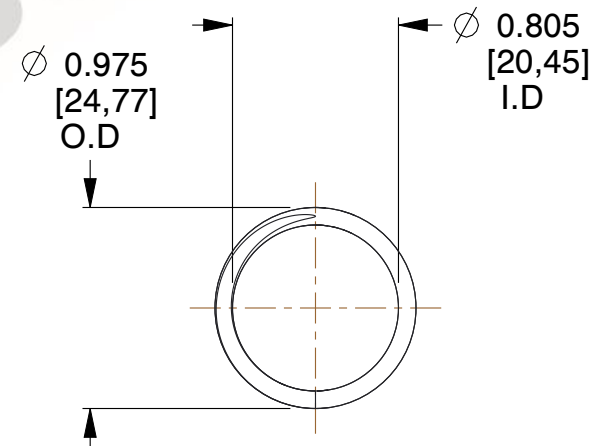
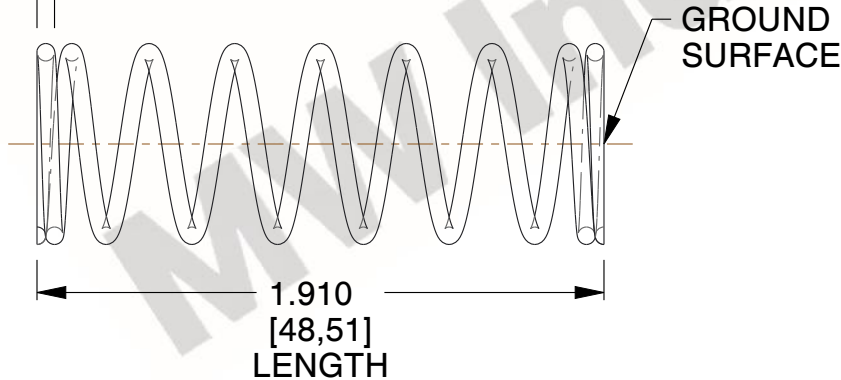


**NOTES:**

1. Material : Music Wire
2. Finish : Glod Irridite
3. Ends : Closed and Ground
4. Total Coils : 9.000
5. Sugg. Max. Deflection : 2.000 (in)
6. Sugg. Max. Load : 30.000 (lbs)
7. All Drawing Dimensions are in Inches [mm]



$\varnothing$  0.085  
 [2,16]  
 WIRE DIA



COMPONENT		SPRINGS	
<b>72390</b>  COMPRESSION SPRINGS		UNIT	
		INCH [mm]	
		SHEET	
		1 of 1	